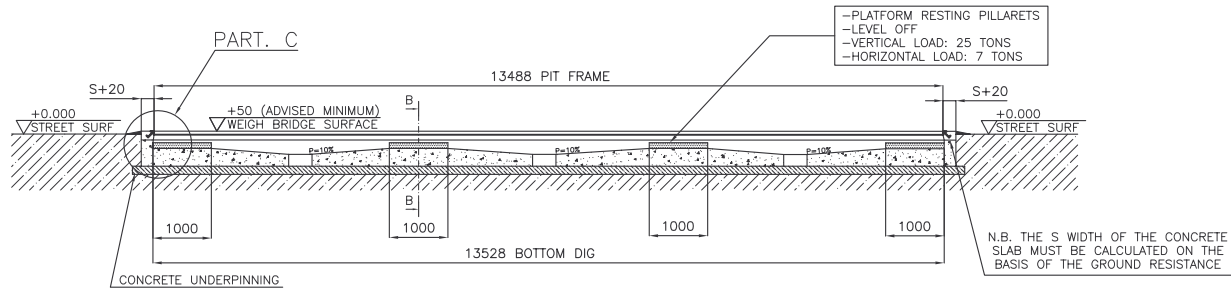
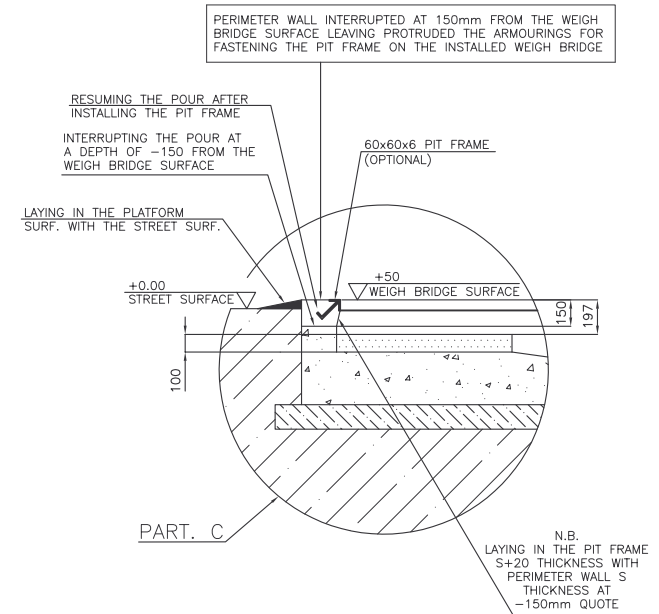
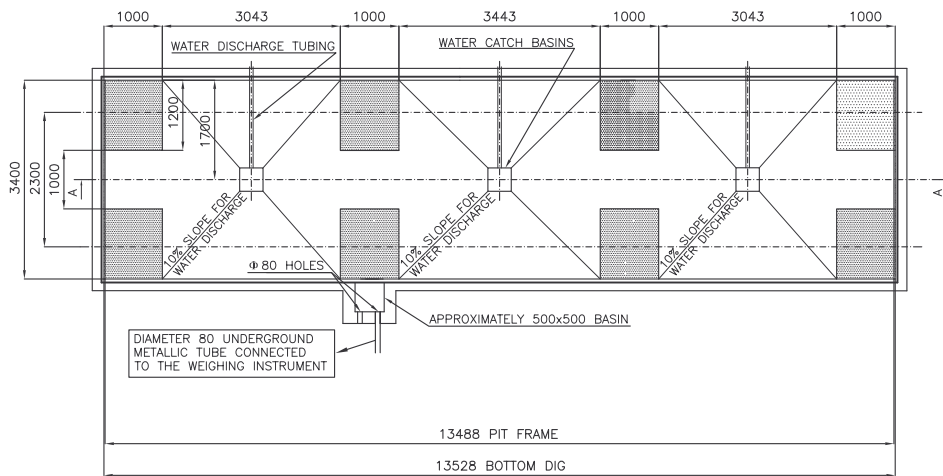
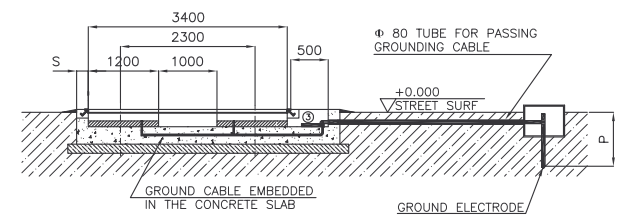


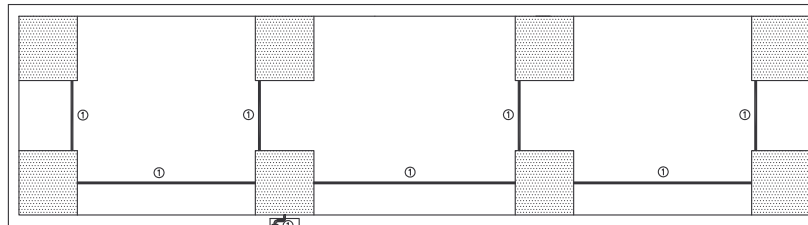
SECT. A-A



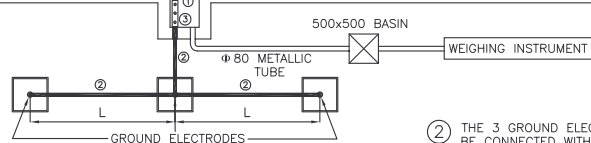
SECT. B-B



① UNCOVERED 50mm SECTION OF COPPER CABLE EMBEDDED IN THE CONCRETE SLAB CONNECTED TO THE ARMOURING. IN CORRESPONDENCE TO EACH PLATFORM RESTING PILLARET HAVE ENOUGH CABLE COME OUT OF THE CONCRETE SLAB IN ORDER TO CONNECT IT TO THE WEIGH BRIDGE



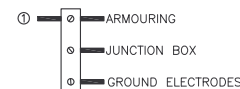
GROUND ELECTRODES LONG ENOUGH IN ORDER TO HAVE AN OVERALL RESISTANCE OF THE GROUNDING SYSTEM OF LESS THAN 1 OHM. GENERALLY THESE ARE INSTALLED WITH AN (L) LENGTH EQUAL TO 3 TIMES THEIR DEPTH (P).



② THE 3 GROUND ELECTRODES MUST BE CONNECTED WITH A 100mm<sup>2</sup> SECTION OF COPPER CABLE

EARTH DIAGRAM: ALL THE METALLIC ELEMENTS OF THE FOUNDATIONS AND WEIGH BRIDGE MUST BE CONNECTED TO THE EARTH PLATES

③ EQUIPOTENTIAL TERMINAL STRIP:



N.B. PLATFORM RESTING PILLARETS MUST ALL BE ON THE SAME LEVEL

REV.	DIS.	DATA	DIMENSIONE														
			3-3	3-4	4-3	4-3	30-30	30-40	40-100	100-200	200-400	400	6-20	10-20	30-20	100	
			GRASSI	+1-2	+4-3	+4-3	+4-3	+1-2	+2	+2	+2	+4	+3	+1-2	+1	+2	
			RE. DITO	+1-1	+1-1	+1-1	+1-1	+1-1	+1-1	+1-1	+1-1	+1-1	+1-1	+1-1	+1-1	+1-1	
			PROFONDITÀ	+1-1	+1-1	+1-1	+1-1	+1-1	+1-1	+1-1	+1-1	+1-1	+1-1	+1-1	+1-1	+1-1	
			MATERIALE	-													
			TRATTAMENTI	-													
			MODIFICA	-													
			DATA-DATE	03/07/07		LG		LT		-		-		A3		-	
			DESCRIZIONE	PIT FOR GROUNDED 13.5m DTW													
			REV. DIS.	DWA ARBO		-		-		-		-		1209F39		-	
			NOTE	-													
			CODICE CAD	-													
			CODICE	-													