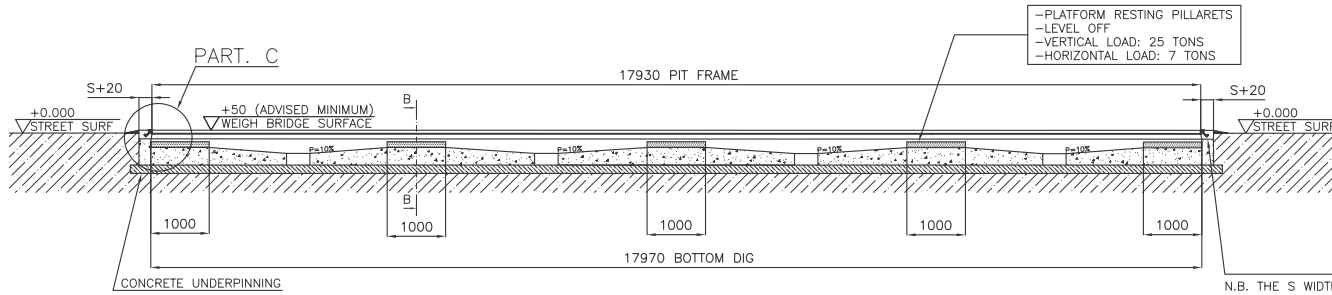
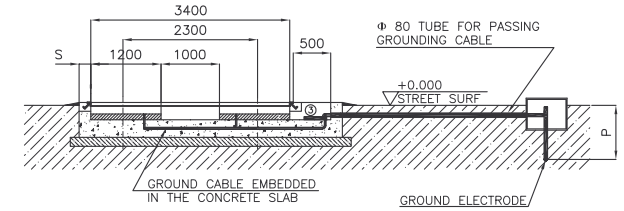


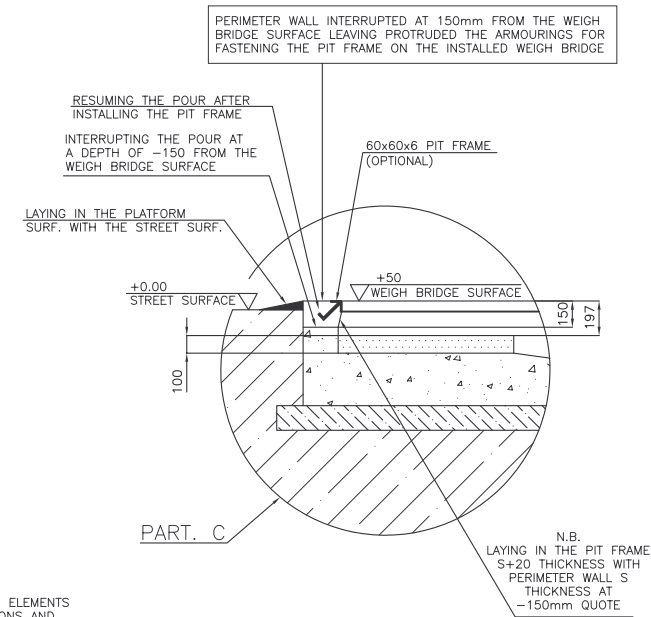
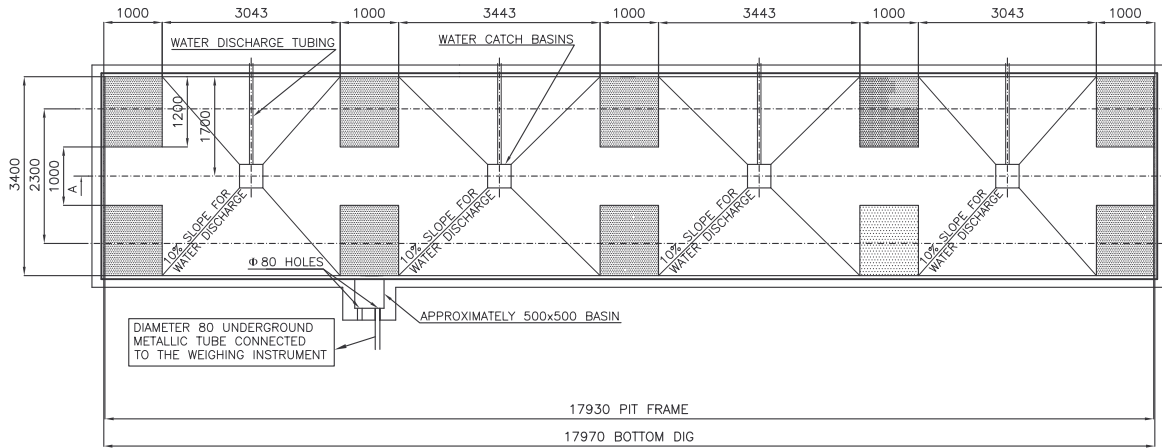
SECT. A-A



SECT. B-B



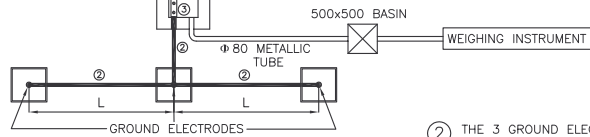
N.B. THE S WIDTH OF THE CONCRETE SLAB MUST BE CALCULATED ON THE BASIS OF THE GROUND RESISTANCE



EARTH DIAGRAM: ALL THE METALLIC ELEMENTS OF THE FOUNDATIONS AND WEIGH BRIDGE MUST BE CONNECTED TO THE EARTH PLATES

N.B. PLATFORM RESTING PILLARETS MUST ALL BE ON THE SAME LEVEL

① UNCOVERED 50mm ϕ SECTION OF COPPER CABLE EMBEDDED IN THE CONCRETE SLAB CONNECTED TO THE ARMOURING. IN CORRESPONDENCE TO EACH PLATFORM RESTING PILLARET HAVE ENOUGH CABLE COME OUT OF THE CONCRETE SLAB IN ORDER TO CONNECT IT TO THE WEIGH BRIDGE



GROUND ELECTRODES LONG ENOUGH IN ORDER TO HAVE AN OVERALL RESISTANCE OF THE GROUNDING SYSTEM OF LESS THAN 1 OHM. GENERALLY THESE ARE INSTALLED WITH AN (L) LENGTH EQUAL TO 3 TIMES THEIR DEPTH (P).

② THE 3 GROUND ELECTRODES MUST BE CONNECTED WITH A 100mm 2 SECTION OF COPPER CABLE

③ EQUIPOTENTIAL TERMINAL STRIP:



| REV. | DIS. | DATA | DIMENSIONE | | | | | | | | | | | | | | | | | | | |
|------|------|------|-------------|--------------------------|------|-------|-------|--------|---------|---------|-----|-----|---------|-------|-----|----|----|----|----|----|----|----|
| | | | 3-3 | 3-4 | 4-3 | 30-30 | 30-40 | 40-100 | 100-200 | 200-400 | 400 | 8-8 | 10-10 | 10-10 | 100 | | | | | | | |
| | | | GRASS | +1-2 | +4-3 | +4-3 | +4-3 | +1-2 | +2 | +3 | +3 | +4 | +3 | +3 | +2 | +2 | +2 | +2 | +2 | +2 | +2 | +2 |
| | | | ME 010 | +1-1 | +4-3 | +4-3 | +4-3 | +1-2 | +2 | +3 | +3 | +4 | +3 | +3 | +2 | +2 | +2 | +2 | +2 | +2 | +2 | +2 |
| | | | PRO 010 | +1-0 | +4-3 | +1-1 | +4-3 | +2 | +3 | +3 | +3 | +4 | +3 | +3 | +2 | +2 | +2 | +2 | +2 | +2 | +2 | +2 |
| | | | MATERIALE | - | | | | | | | | | | | | | | | | | | |
| | | | TRATTAMENTI | - | | | | | | | | | | | | | | | | | | |
| | | | MODIFICA | - | | | | | | | | | | | | | | | | | | |
| | | | DATA-DATE | 03/07/07 | | | LG | | | LT | | | - | | | A3 | | | | | | |
| | | | DESCRIZIONE | PIT FOR GROUNDED 18m DTW | | | | | | | | | | | | | | | | | | |
| | | | REV. DIS. | DWM ARBO | | | - | | | - | | | 1209F40 | | | | | | | | | |
| | | | NOTE | - | | | | | | | | | | | | | | | | | | |